

& Ho.Re.Ca. SERVICES

Il lavoro con il pubblico è fatto di sollecitudine, dedizione e piccole attenzioni. Si realizza appieno nel delicato equilibrio tra dettagli classici e gradite sorprese.

Working with the public is made of solicitude, dedication and small attentions. It is fully realized in the delicate balance between classic details and pleasant surprises.

Esattamente ciò che la linea **Giblor's Ho.Re.Ca & Services** offre a te, che ti dedichi ad offrire servizi capaci di accendere il sorriso sul volto di ogni cliente. Anche il più esigente.

*Exactly what the **Giblor's line Ho.Re.Ca & Services** offers a you, dedicated to offering services capable of light up the smile on every customer's face. Even the most demanding.*

Capi eleganti e funzionali, con una vestibilità perfetta e con la massima coordinabilità: abbiamo creato per te una collezione ampia e varia, che spazia da pezzi senza tempo alle ultime novità del design.

Elegant and functional garments, with a perfect fit and with maximum coordination: we have created an extensive collection for you and varied, ranging from timeless pieces to latest design news.

Il mix perfetto tra impegno e stile.

The perfect mix between commitment and style.

Giblor's
italian worklife specialist

La passione per il lavoro e la voglia di migliorare porta spesso a piccole e grandi trasformazioni. Idee che nascono e si definiscono con l'obiettivo di accompagnarti sempre più vicino ai tuoi desideri. È per questo che la collezione Giblor's 2020 introduce una novità: la divisione per linee. Una scelta utile a definire meglio la crescente quantità di capi disponibili. Attraverso queste tre categorie ti accompagniamo nella scelta dello stile che più ti rappresenta o quello che senti più affine al tuo stato d'animo, o più adatto alle esigenze di uno specifico ambiente di lavoro. Per poter sempre essere te stesso. Al meglio.

Elegance
COLLECTION
Glamour
COLLECTION
Evergreen
COLLECTION

The passion for work and the desire to improve often leads to small and large transformations. Ideas that are born and defined with the goal to accompany you ever closer to yours wishes. This is why the Giblor's 2020 collection introduces a novelty: the division by lines. A useful choice to better define the growing quantity of garments available. Through these three categories you will be accompany in the choice of the style that most represents you or what you feel closest to yours state of mind, or more suited to one's needs specific work environment. In order to always be yourself. To the best.



Capi perfetti per te, che vivi il lavoro come un impegno teso ad offrire la massima eccellenza.

Grembiuli e gilet con tessuti ricercati e linea studiata nei minimi dettagli, per indossare ogni capo come un abito su misura.

Se ti muovi in un ambiente da vivere come un viaggio nel lusso,

G'Elegance è la collezione giusta per te.

Elegance

COLLECTION

Perfect garments for you, that experience work as a commitment aimed at offering the utmost excellence.

Aprons and vests with refined fabrics and lines studied in detail, to wear every garment as a tailored suit.

If you move in an environment to live like a journey into luxury,

G' Elegance is the collection right for you.

ho.re.ca.
& services

Brigata Casa Maria Luigia, Modena

FLEXFIT SYSTEM

EASY CARE

COMFORT FIT

EASY CARE

COMFORT FIT



BEATRICE

Dettagli / Details

- Sfoderato - 1 grande tasca - 2 spacchi laterali
- Abbottonatura nascosta con automatici

- Unlined - 1 big pocket - 2 side vents
- Concealed buttoning with press studs

Taglie / Sizes

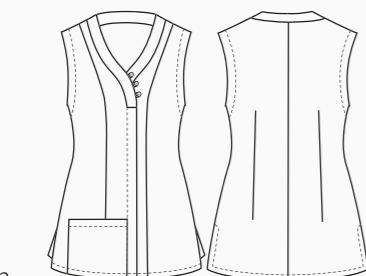
XS ÷ XXL Slim Fit

Art. 18P02K032

000 Nero / Black

Tessuto / Fabric

95% poliestere 5% elasthan
95% polyester 5% elastane
220 g / m²



GAIA

Dettagli / Details

- Sfoderato - 2 tasche - 2 spacchi laterali
- Abbottonatura nascosta con automatici

- Unlined - 2 pockets - 2 side vents
- Concealed buttoning with press studs

Taglie / Sizes

XS ÷ XXL Slim Fit

Art. 18P02K033

000 Nero / Black

Tessuto / Fabric

95% poliestere 5% elasthan
95% polyester 5% elastane
220 g / m²



RASCHEL

Dettagli / Details

- Foderato - 2 tasche
- 8 bottoni
- Fascette regolabili

- Lined - 2 pockets
- 8 buttons
- Adjustable buckle

Taglie / Sizes

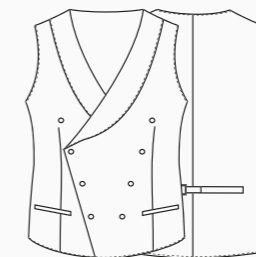
S ÷ XXXL Slim Fit

Art. 18P01E001

000 Nero / Black

Tessuto / Fabric

95% poliestere 5% elasthan
95% polyester 5% elastane
220 g / m²



JENNY

Dettagli / Details

- Foderato - 2 tasche
- 8 bottoni
- Fascette regolabili

- Lined - 2 pockets
- 8 buttons
- Adjustable buckle

Taglie / Sizes

XS ÷ XXL Slim Fit

Art. 18P01E002

000 Nero / Black

Tessuto / Fabric

95% poliestere 5% elasthan
95% polyester 5% elastane
220 g / m²





UNCHANGE

TECH



UNCHANGE

TECH



LUXSATIN

BIG
100 CM

EASY CARE



LUXSATIN

BIG
100 CM

EASY CARE



BRASSERIE

Dettagli / Details

- 1 tasca
- 1 pocket

Taglie / Sizes

Taglia unica / One size

Misure / Dimensions

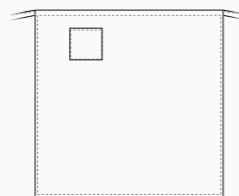
100x100 cm

Art. 552

000 Nero / Black

Tessuto / Fabric

100% poliestere
100% polyester
220 g / m²



PETRA

Dettagli / Details

- Foderato - 2 tasche
- 4 bottoni - Fascette regolabili

- Lined - 2 pockets

- 4 buttons - Adjustable buckle

Taglie / Sizes

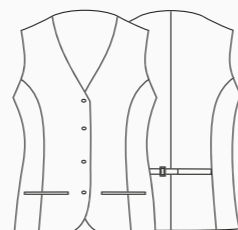
XS ÷ XXL Slim Fit

Art. 7M108

000 Nero / Black

Tessuto / Fabric

100% poliestere
100% polyester
170 g / m²



PERTH

Dettagli / Details

- 2 tasche
- Spacco centrale

- 2 pockets

- Split in the middle

Taglie / Sizes

Taglia unica / One size

Misure / Dimensions

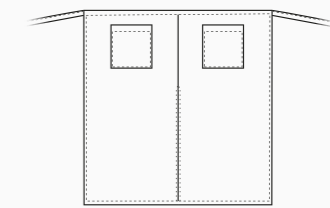
100x100 cm

Art. 18P01H055

000 Nero / Black
119 Grigio / Grey

Tessuto / Fabric

50% cotone 50% poliestere
50% cotton 50% polyester
180 g / m²





FRANCISCA

Dettagli / Details

- Foderato - 2 tasche in contrasto
- 4 bottoni - Fascette regolabili

- Lined
- 2 contrasted pockets
- 4 buttons
- Adjustable buckle

Taglie / Sizes

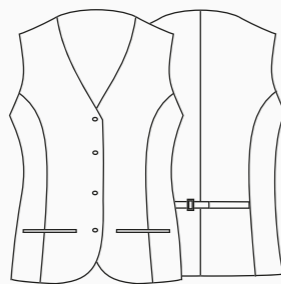
XS ÷ XXL Slim Fit

Art. 11P01E77

P170 Polvere / Dusty grey

Tessuto / Fabric

100% poliestere
100% polyester
220 g / m²



MIGUEL

Dettagli / Details

- Foderato - 2 tasche in contrasto
- 4 bottoni - Fascette regolabili

- Lined
- 2 contrasted pockets
- 4 buttons
- Adjustable buckle

Taglie / Sizes

XS ÷ XXXL Regular Fit

Art. 11P01E76

P170 Polvere / Dusty grey

Tessuto / Fabric

100% poliestere
100% polyester
220 g / m²



BOB

Dettagli / Details

- 1 tasca
- 1 pocket

Taglie / Sizes Taglia unica / One size

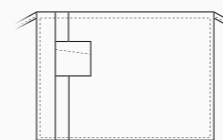
Misure / Dimensions 80x98

Art. 11P01H26

P170 Polvere / Dusty grey

Tessuto / Fabric

100% poliestere / polyester - 220 g / m²



DEMIDOFF

Dettagli / Details

- 1 tasca
- Allacciatura collo regolabile con velcro
- 1 pocket
- Adjustable halter with velcro

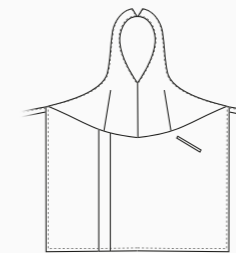
Taglie / Sizes Taglia unica / One size

Art. 11P01H27

P170 Polvere / Dusty grey

Tessuto / Fabric

100% poliestere / polyester - 220 g / m²



RAISSA

Dettagli / Details

- 2 tasche
- Allacciatura collo regolabile con velcro
- 2 pockets
- Adjustable halter with velcro

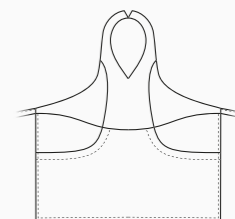
Taglie / Sizes Taglia unica / One size

Art. 11P01H25

P170 Polvere / Dusty grey

Tessuto / Fabric

100% poliestere / polyester - 220 g / m²





EASY CARE
COMFORT FIT

EASY CARE
COMFORT FIT

CHERIE

Dettagli / Details

- Foderato - 2 tasche - 4 bottoni - Fascette regolabili

- Lined - 2 pockets - 4 buttons - Adjustable buckle

Taglie / Sizes

XS ÷ XXL Slim Fit

Art. 18P01E421

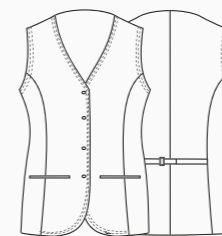
077 Grigio scuro / Dark grey

Tessuto esterno / Outside fabric

67% cotone 31% poliestere 2% elasthan
67% cotton 31% polyester 2% elastane
170 g / m²

Tessuto interno / Lining

100% poliestere
100% polyester



MIGUEL

Dettagli / Details

- Foderato - 2 tasche - 4 bottoni - Fascette regolabili

- Lined - 2 pockets - 4 buttons - Adjustable buckle

Taglie / Sizes

S ÷ XXXL Regular Fit

Art. 18P01E420

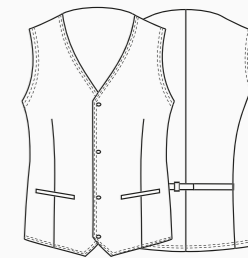
077 Grigio scuro / Dark grey

Tessuto esterno / Outside fabric

67% cotone 31% poliestere 2% elasthan
67% cotton 31% polyester 2% elastane
170 g / m²

Tessuto interno / Lining

100% poliestere
100% polyester





Regali esperienze fatte di suggestioni e originalità?

Attraverso grembiuli, accessori e abiti di tendenza, con la linea **G' Glamour** puoi creare abbinamenti particolari, perfetti per andare incontro ai desideri di una clientela moderna e innovativa.

Gli indumenti giusti per te che vivi la creatività come un'occasione per offrire il meglio.

Glamour

COLLECTION

Do you give away experiences made of suggestions and originality?

*Through aprons, accessories and clothes by trend, with the **G' Glamour** line you can create particular combinations, perfect to meet to the desires of a modern and innovative clientele.*

The right clothes for you that live creativity as an opportunity to offer the best.

ho.re.ca.
& services



MIGUEL

Dettagli / Details

- 2 tasche - 4 bottoni - Fascette regolabili

- 2 pockets - 4 buttons - Adjustable buckles

Taglie / Sizes

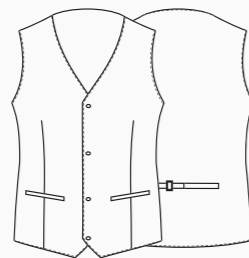
S ÷ XXXL Regular Fit

Art. 20P01E420

S322 Marrone / Brown

Tessuto / Fabric

68% poliestere 30% viscosa 2% elasthan
68% polyester 30% viscose 2% elastane
175 g / m²



CORA

Dettagli / Details

- 2 tasche - 4 bottoni - Fascette regolabili

- 2 pockets - 4 buttons - Adjustable buckles

Taglie / Sizes

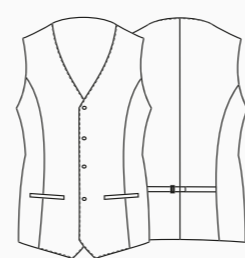
XS ÷ XXL Slim Fit

Art. 20P01E150

S322 Marrone / Brown

Tessuto / Fabric

68% poliestere 30% viscosa 2% elasthan
68% polyester 30% viscose 2% elastane
175 g / m²



DOUGLAS

Dettagli / Details

- 2 tasche - 1 taschino portapenne

- Allacciatura collo regolabile

- 2 pockets - 1 pen pocket

- Adjustable halter

Taglie / Sizes

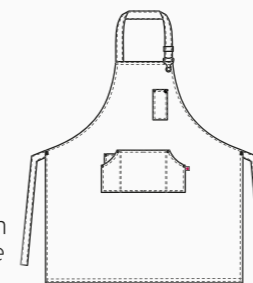
Taglia unica / One size

Art. 20P01H013

S322 Marrone / Brown

Tessuto / Fabric

68% poliestere 30% viscosa 2% elasthan
68% polyester 30% viscose 2% elastane
175 g / m²



SHANNON

Dettagli / Details

- 2 tasche

- 1 taschino portapenne

- 2 pockets

- 1 pen pocket

Taglie / Sizes

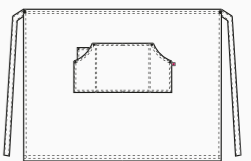
Taglia unica / One size

Art. 20P01H014

S322 Marrone / Brown

Tessuto / Fabric

68% poliestere 30% viscosa 2% elasthan
68% polyester 30% viscose 2% elastane
175 g / m²



SNOW

Dettagli / Details

- Sfoderato
- 2 tasche
- 6 bottoni automatici
- Fascette regolabili
- Inserti in Alcantara

- Unlined
- 2 pockets
- 6 press studs
- Adjustable buckle
- Alcantara inserts

Taglie / Sizes

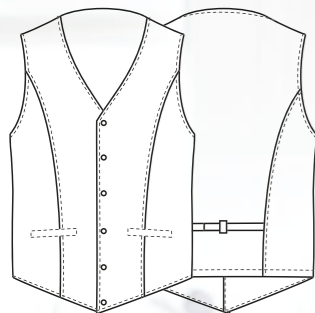
S ÷ XXXL Slim Fit

Art. 19P01E092

J000 Nero / Black

Tessuto / Fabric

75% cotone 23% poliestere 2% elasthan
75% cotton 23% polyester 2% elastane
210 g / m²



SANSA

Dettagli / Details

- Sfoderato
- 2 tasche
- 5 bottoni automatici
- Fascette regolabili
- Inserti in Alcantara

- Unlined
- 2 pockets
- 5 press studs
- Adjustable buckle
- Alcantara inserts

Taglie / Sizes

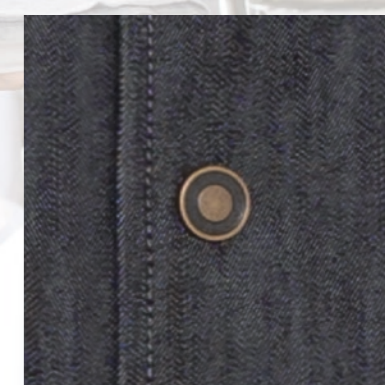
XS ÷ XXXL Slim Fit

Art. 19P01E093

J000 Nero / Black

Tessuto / Fabric

75% cotone 23% poliestere 2% elasthan
75% cotton 23% polyester 2% elastane
210 g / m²





Ti dedichi a un pubblico amante degli stili classici e lontano dalle mode passeggere?

Nella collezione **G'Evergreen** puoi trovare gilet, camicie, accessori e abiti dal mood intramontabile.

Capi adatti ad ogni occasione, pensati per te che conosci il fascino della discrezione e sai trasformare la semplicità in un privilegio. Insostituibili compagni di viaggio per chi sa accogliere con classe, creando atmosfere fuori dal tempo.

Evergreen

COLLECTION

You dedicate yourself to a public that loves classic styles and far from passing fashions?

*In the **G' Evergreen** collection you can find vests, shirts, accessories and dresses with a timeless mood. Clothes suitable for every occasion, designed for you that you know the charm of discretion and you know transform simplicity into a privilege. Irreplaceable traveling companions for those who know how to welcome with class, creating timeless atmospheres.*

ho.re.ca.
& services

MIGUEL

Dettagli / Details

- Foderato
- 2 tasche
- 4 bottoni
- Fascette regolabili

- Lined
- 2 pockets
- 4 buttons
- Adjustable buckle

Taglie / Sizes

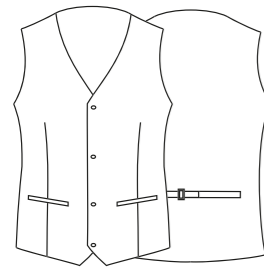
XS ÷ XXXL Regular Fit

Art. 106/E

000 Nero / Black

Tessuto / Fabric

100% poliestere / 100% polyester
170 g / m²



ROSITA

Dettagli / Details

- Sfoderato
- 2 tasche
- 4 bottoni
- Fascette regolabili

- Unlined
- 2 pockets
- 4 buttons
- Adjustable buckle

Taglie / Sizes

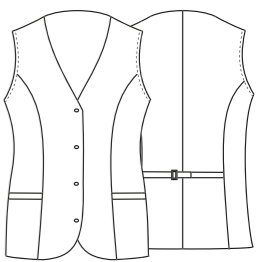
XS ÷ XXL Regular Fit

Art. 270/E

000 Nero / Black

Tessuto / Fabric

100% poliestere
100% polyester
170 g / m²



Art. 106BX

006 Bordeaux / Burgundy

100% poliestere / 100% polyester
220 g / m²



Art. 106

004 Blu / Blue

100% poliestere / 100% polyester
170 g / m²



Art. 270BX

006 Bordeaux / Burgundy

100% poliestere / 100% polyester
220 g / m²



Art. 270

004 Blu / Blue

100% poliestere / 100% polyester
170 g / m²

& no.re.ca. services

COMPLETI E CAPIPALLA
SUITS AND JACKETS

Giblor's
italian worklife specialist





COMFORT FIT 119 Grigio / Grey



COMFORT FIT 000 Nero / Black



COMFORT FIT 004 Blu / Blue



DAMIANO

Dettagli / Details

- Sfiancata - Foderata
- 3 bottoni - 2 spacchi laterali

- Tight waisted - Lined
- 3 buttons - 2 side vents

Taglie / Sizes

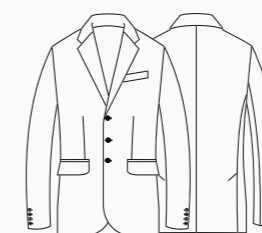
44 ÷ 60 Slim Fit

Art. 12P01C230

119 Grigio / Grey
000 Nero / Black
004 Blu / Blue

Tessuto / Fabric

53% poliestere 43% lana 4% elasthan
53% polyester 43% wool 4% elastane
173 g / m²



MAURO

Dettagli / Details

- Foderato - 2 tasche alla francese
- 2 taschine posteriori

- Lined - 2 side pockets
- 2 rear pockets

Taglie / Sizes

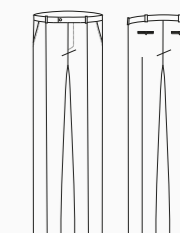
40 ÷ 64 Slim Fit

Art. 12P01P231

119 Grigio / Grey
000 Nero / Black
004 Blu / Blue

Tessuto / Fabric

53% poliestere 43% lana 4% elasthan
53% polyester 43% wool 4% elastane
173 g / m²





COMFORT FIT 119 Grigio / Grey

COMFORT FIT 000 Nero / Black

COMFORT FIT 004 Blu / Blue



Gonna / Skirt
MIA - Art. 12P01B268
pag. 327



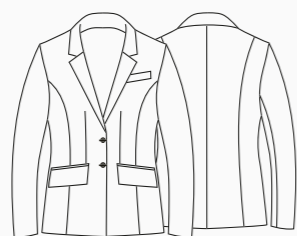
VITTORIA

Dettagli / Details
- Sfiancata - Foderata - 2 bottoni
- Tight waisted - Lined - 2 buttons

Taglie / Sizes
XS ÷ XXXL Slim Fit

Art. 12P01C232
119 Grigio / Grey
000 Nero / Black
004 Blu / Blue

Tessuto / Fabric
53% poliestere 43% lana 4% elasthan
53% polyester 43% wool 4% elastane
173 g / m²



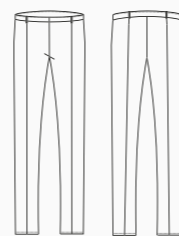
MATILDE

Dettagli / Details
- Con passanti - Con zip nel fianco
- Belt loops - Side zip fastening

Taglie / Sizes
XS ÷ XXXL Slim Fit

Art. 12P01P233
119 Grigio / Grey
000 Nero / Black
004 Blu / Blue

Tessuto / Fabric
53% poliestere 43% lana 4% elasthan
53% polyester 43% wool 4% elastane
173 g / m²





Giblor's
italian worklife specialist

Giacca **ELIO**
pag. 295

ACCESSORI
pag. 356

Giacca **DANA**
pag. 294

DANA

Dettagli / Details

- Sfiacata - Sfoderata
- 2 bottoni

- Tight waisted - Unlined
- 2 buttons

Taglie / Sizes

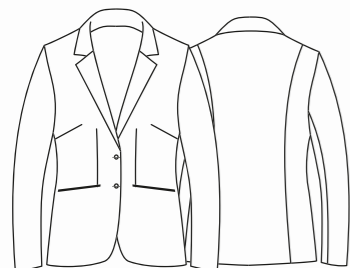
XS ÷ XXXL Slim Fit

Art. 17P01C901

000 Nero / Black

Tessuto / Fabric

95% poliestere 5% elasthan
95% polyester 5% elastane
220 g / m²



LAYLA

Dettagli / Details

- Fondo stretto
- Vita bassa - 2 tasche

- Slim leg - Low waist
- 2 pockets

Taglie / Sizes

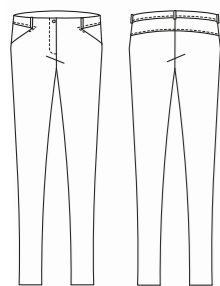
XS ÷ XXXL Slim Fit

Art. 17P01P903

000 Nero / Black

Tessuto / Fabric

95% poliestere 5% elasthan
95% polyester 5% elastane
220 g / m²



Gonna abbinabile
Coordinated skirt
KATIA
Art. 17P01B986
pag. 327

ELIO

Dettagli / Details

- Sfoderata - 2 bottoni

- Unlined - 2 buttons

Taglie / Sizes

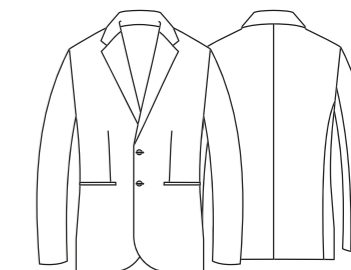
44 ÷ 58 Slim Fit

Art. 17P01C966

000 Nero / Black

Tessuto / Fabric

95% poliestere 5% elasthan
95% polyester 5% elastane
220 g / m²



GIOVANNI

Dettagli / Details

- Sfoderato - Fondo stretto
- Vita bassa
- 2 tasche alla francese
- 2 taschine posteriori

- Unlined - Slim leg
- Low waist
- 2 side pockets
- 2 rear pockets

Taglie / Sizes

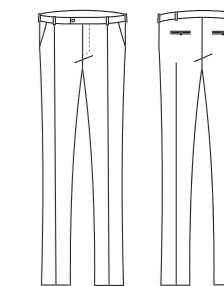
42 ÷ 58 Slim Fit

Art. 17P01P546

000 Nero / Black

Tessuto / Fabric

95% poliestere 5% elasthan
95% polyester 5% elastane
220 g / m²



DANA

Dettagli / Details

- Sfiacata - Sfoderata
- 2 bottoni

- Tight waisted - Unlined
- 2 buttons

Taglie / Sizes

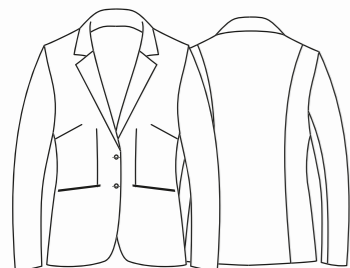
XS ÷ XXXL Slim Fit

Art. 20P01C901

004 Blu / Blue

Tessuto / Fabric

95% poliestere 5% elastan
95% polyester 5% elastane
220 g / m²



LAYLA

Dettagli / Details

- Fondo stretto
- Vita bassa - 2 tasche

- Slim leg - Low waist
- 2 pockets

Taglie / Sizes

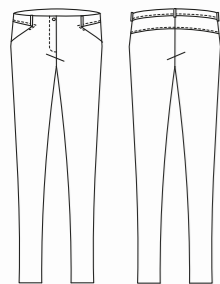
XS ÷ XXXL Slim Fit

Art. 20P01P903

004 Blu / Blue

Tessuto / Fabric

95% poliestere 5% elastan
95% polyester 5% elastane
220 g / m²



Gonna abbinabile
Coordinated skirt
KATIA
Art. 17P01B986
pag. 327

ELIO

Dettagli / Details

- Sfoderata - 2 bottoni

- Unlined - 2 buttons

Taglie / Sizes

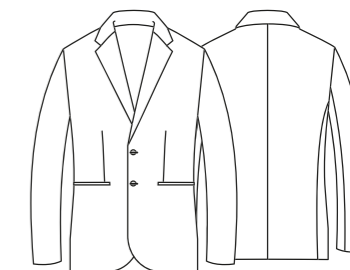
44 ÷ 58 Slim Fit

Art. 20P01C966

004 Blu / Blue

Tessuto / Fabric

95% poliestere 5% elastan
95% polyester 5% elastane
220 g / m²



GIOVANNI

Dettagli / Details

- Sfoderato - Fondo stretto
- Vita bassa

- 2 tasche alla francese
- 2 taschine posteriori

- Unlined - Slim leg
- Low waist
- 2 side pockets
- 2 rear pockets

Taglie / Sizes

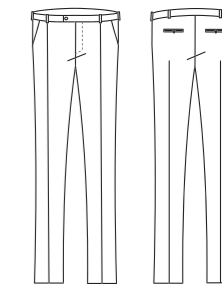
42 ÷ 58 Slim Fit

Art. 20P01P546

004 Blu / Blue

Tessuto / Fabric

95% poliestere 5% elastan
95% polyester 5% elastane
220 g / m²



JOSEF

Dettagli / Details

- Sfiancata - Sfoderata
- 2 bottoni - 2 spacchi laterali

- *Tight waisted - Unlined*
- *2 buttons - 2 side vents*

Taglie / Sizes

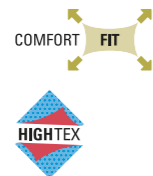
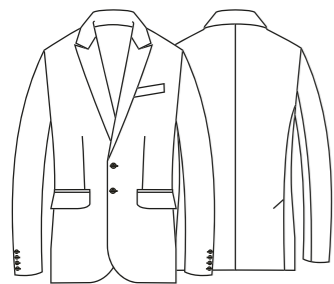
42 ÷ 58 Slim Fit

Art. 15P01C600

000 Nero / Black

Tessuto / Fabric

70% poliestere 25% viscosa 5% elasthan
70% polyester 25% viscose 5% elastane
200 g / m²



ADAM

Dettagli / Details

- Vita bassa - Fondo stretto
- 2 tasche alla francese
- 2 taschine posteriori

- *Low waist - Slim leg*
- *2 side pockets*
- *2 rear pockets*

Taglie / Sizes

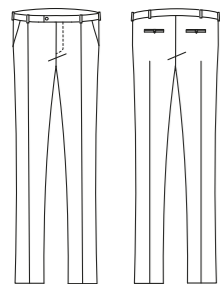
42 ÷ 56 Slim Fit

Art. 15P01P602

000 Nero / Black

Tessuto / Fabric

70% poliestere 25% viscose 5% elasthan
70% polyester 25% viscose 5% elastane
200 g / m²



ZAIRA

Dettagli / Details

- Sfiancata
- Sfoderata
- 2 bottoni

- *Tight waisted*
- *Unlined*
- *2 buttons*

Taglie / Sizes

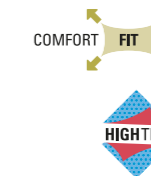
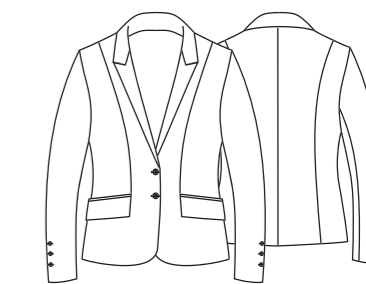
XS ÷ XXXL Slim Fit

Art. 15P01C603

000 Nero / Black

Tessuto / Fabric

70% poliestere 25% viscosa 5% elasthan
70% polyester 25% viscose 5% elastane
200 g / m²



NOEMI

Dettagli / Details

- Vita bassa - Fondo stretto
- 2 tasche alla francese
- 2 taschine posteriori

- *Low waist - Slim leg*
- *2 side pockets*
- *2 rear pockets*

Taglie / Sizes

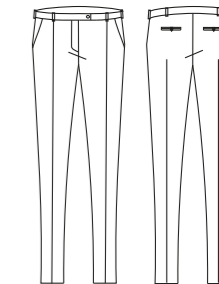
XS ÷ XXXL Slim Fit

Art. 15P01P605

000 Nero / Black

Tessuto / Fabric

70% poliestere 25% viscosa 5% elasthan
70% polyester 25% viscose 5% elastane
200 g / m²



JOSEF

Dettagli / Details

- Sfiacata - Sfoderata
- 2 bottoni - 2 spacchi laterali

- Tight waisted - Unlined
- 2 buttons - 2 side vents

Taglie / Sizes

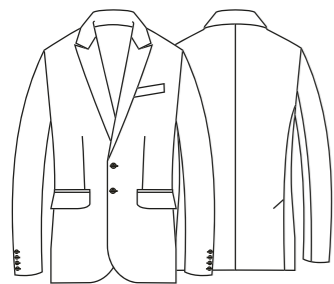
42 ÷ 58 Slim Fit

Art. 15P01C600

004 Blu / Blue

Tessuto / Fabric

70% poliestere 25% viscosa 5% elasthan
70% polyester 25% viscose 5% elastane
200 g / m²



ADAM

Dettagli / Details

- Vita bassa - Fondo stretto
- 2 tasche alla francese
- 2 taschine posteriori

- Low waist - Slim leg
- 2 side pockets
- 2 rear pockets

Taglie / Sizes

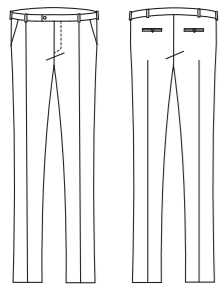
42 ÷ 56 Slim Fit

Art. 15P01P602

004 Blu / Blue

Tessuto / Fabric

70% poliestere 25% viscosa 5% elasthan
70% polyester 25% viscose 5% elastane
200 g / m²



ZAIRA

Dettagli / Details

- Sfiacata
- Sfoderata
- 2 bottoni

- Tight waisted
- Unlined
- 2 buttons

Taglie / Sizes

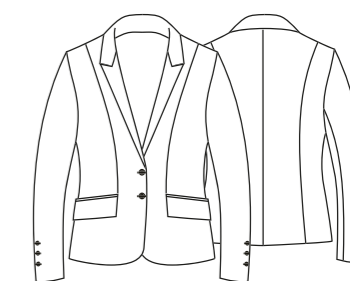
XS ÷ XXXL Slim Fit

Art. 15P01C603

004 Blu / Blue

Tessuto / Fabric

70% poliestere 25% viscosa 5% elasthan
70% polyester 25% viscose 5% elastane
200 g / m²



NOEMI

Dettagli / Details

- Vita bassa - Fondo stretto
- 2 tasche alla francese
- 2 taschine posteriori

- Low waist - Slim leg
- 2 side pockets
- 2 rear pockets

Taglie / Sizes

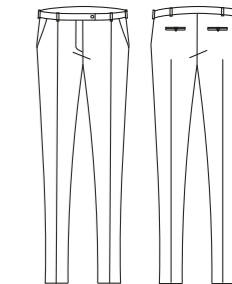
XS ÷ XXXL Slim Fit

Art. 15P01P605

004 Blu / Blue

Tessuto / Fabric

70% poliestere 25% viscosa 5% elasthan
70% polyester 25% viscose 5% elastane
200 g / m²



FABIO

Dettagli / Details

- Sfoderata
- Doppia asola

- Unlined
- Cufflink

Taglie / Sizes

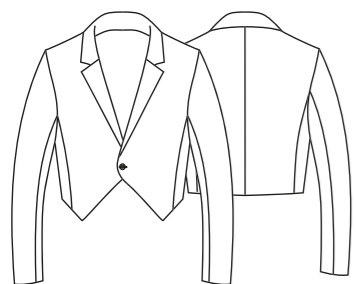
XS ÷ XXXL Slim Fit

Art. 182

000 Nero / Black
120 Panna / Cream

Tessuto / Fabric

100% poliestere
100% polyester
220 g / m²



Art. 182
120 Panna / Cream

ILENIA

Dettagli / Details

- Sfoderata
- Doppia asola

- Unlined
- Cufflink

Taglie / Sizes

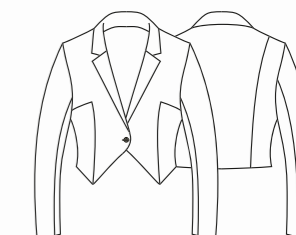
XS ÷ XXXL Slim Fit

Art. 1182

000 Nero / Black
120 Panna / Cream

Tessuto / Fabric

100% poliestere
100% polyester
220 g / m²



Art. 1182
120 Panna / Cream

VITTORIO

Dettagli / Details

- Sfoderata
- 1 bottone

- Unlined
- 1 button

Taglie / Sizes

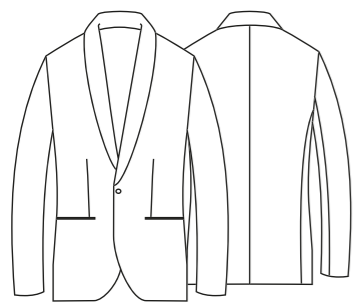
XS ÷ XXXL Slim Fit

Art. 121

120 Panna / Cream
000 Nero / Black
00 Bianco / White

Tessuto / Fabric

100% poliestere / 100% polyester
220 g / m²



PIER

Dettagli / Details

- Coreana - Sfoderata - Bottoni in metallo
- Mandarin collar - Unlined - Metal buttons

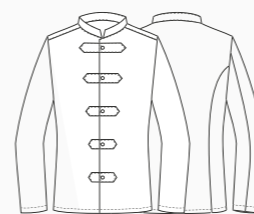
- Mandarin collar - Unlined - Metal buttons

Taglie / Sizes Taglia unica / One size

Taglie / Sizes XS ÷ XXXL Slim Fit

Art. 138

00 Bianco / White
Tessuto / Fabric
100% poliestere / polyester - 220 g / m²



PIER LUX

Dettagli / Details

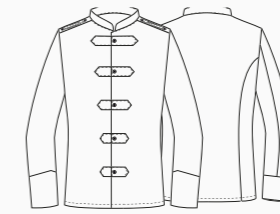
- Coreana - Sfoderata con bottone in metallo più alamaro dorato

- Mandarin collar - Unlined with metal buttons and gold frogs

Taglie / Sizes XS ÷ XXXL Slim Fit

Art. 138/A

120 Panna / Cream
Tessuto / Fabric
100% poliestere / polyester - 220 g / m²



PIER

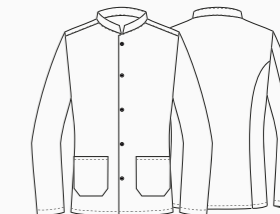
Dettagli / Details

- Coreana - 2 tasche - Bottoni in metallo
- Mandarin collar - 2 pockets - Metal buttons

Taglie / Sizes XS ÷ XXXL Slim Fit

Art. 135

00 Bianco / White
Tessuto / Fabric
100% cotone / cotton - 180 g / m²



Art. 121
000 Nero / Black



Art. 121
00 Bianco / White

SOTTOCOLLO PER COREANA UNDERCOLLAR

Art. 3
00 Bianco / White

Tessuto / Fabric
65% poliestere 35% cotone
65% polyester 35% cotton

Taglie / Sizes
Taglia unica / One size



KATIA

Dettagli / Details
- Sfoderata - Vita bassa
- Spacco nel centro dietro

- Unlined - Low waist
- Back centre vent

Art. 20P01B986
004 Blu / Blue

Art. 17P01B986
000 Nero / Black



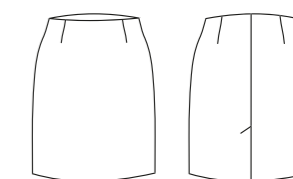
Art. 17P01B986
000 Nero / Black

95% poliestere 5% elastan
95% polyester 5% elastane
220 g / m² - XS ÷ XXXL



Art. 20P01B986
004 Blu / Blue

95% poliestere 5% elastan
95% polyester 5% elastane
220 g / m² - XS ÷ XXXL



MIA

Dettagli / Details
- Foderata - Con fascione
- Chiusura con zip
nel centro dietro
- Spacco nel centro dietro

- Lined
- With waist band
- Back zip fastening
- Back centre vent

Art. 12P01B268
000 Nero / Black
004 Blu / Blue
119 Grigio / Grey



Art. 12P01B268
000 Nero / Black

53% poliestere 43% lana 4% elastan
53% polyester 43% wool 4% elastane
173 g / m² - XS ÷ XXL



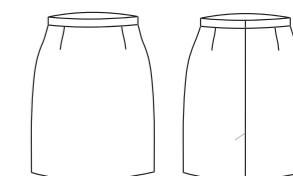
Art. 12P01B268
004 Blu / Blue

53% poliestere 43% lana 4% elastan
53% polyester 43% wool 4% elastane
173 g / m² - XS ÷ XXL



Art. 12P01B268
119 Grigio / Grey

53% poliestere 43% lana 4% elastan
53% polyester 43% wool 4% elastane
173 g / m² - XS ÷ XXL





MATILDE

Dettagli / Details

- Zip nel fianco
- Passanti

- Side zip fastening
- Belt loops

Taglie / Sizes

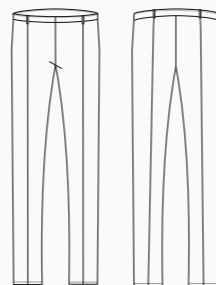
XS ÷ XXXL

Art. 12P01P233

004 Blu / Blue
119 Grigio / Grey
000 Nero / Black

Tessuto / Fabric

53% poliestere 43% lana 4% elasthan
53% polyester 43% wool 4% elastane
173 g / m²



NOEMI

Dettagli / Details

- Fondo stretto
- 2 tasche alla francese
- 2 taschine posteriori

- Slim leg
- 2 side pockets
- 2 rear pockets

Taglie / Sizes

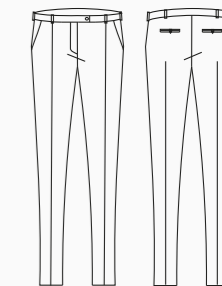
XS ÷ XXXL Slim Fit

Art. 15P01P605

000 Nero / Black
004 Blu / Blue

Tessuto / Fabric

70% poliestere 25% viscosa 5% elasthan
70% polyester 25% viscose 5% elastane
200 g / m²





Art. 20P01P903
004 Blu / Blue



Art. 17P01P903
000 Nero / Black



Art. 18P02P903
000 Nero / Black



RINA

Dettagli / Details

- 2 tasche - Con passanti
- 2 pockets - Belt loops

Taglie / Sizes

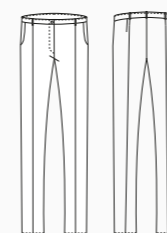
XS ÷ XXXL Slim Fit

Art. 16P01P1584

004 Blu / Blue

Tessuto / Fabric

100% poliestere
100% polyester
170 g / m²



RINA

Dettagli / Details

- 2 tasche - Con passanti
- 2 pockets - Belt loops

Taglie / Sizes

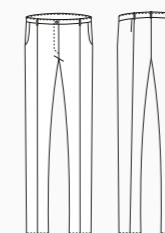
XS ÷ XXXL Slim Fit

Art. 16P01P1584

000 Nero / Black

Tessuto / Fabric

100% poliestere
100% polyester
170 g / m²



TWIGGY

Dettagli / Details

- Fondo largo - Vita normale - 2 tasche
- Wide leg - Normal waist - 2 pockets

Taglie / Sizes

XS ÷ XXL

Art. 18P02P057

000 Nero / Black

Tessuto / Fabric

100% poliestere
100% polyester
90 g / m²



LAYLA

Dettagli / Details

- Fondo stretto
- 2 tasche

- Slim leg
- 2 pockets

Art. 20P01P903

004 Blu / Blue

Art. 17P01P903

000 Nero / Black

Tessuto / Fabric

95% poliestere 5% elastan
95% polyester 5% elastane
220 g / m²

Taglie / Sizes XS ÷ XXXL

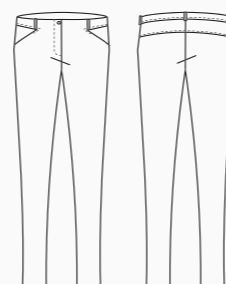
Art. 18P02P903

000 Nero / Black

Tessuto / Fabric

97% cotone 3% elastan
97% cotton 3% elastane
185 g / m²

Taglie / Sizes XS ÷ XXL



MATTEO

Dettagli / Details

- Sfoderato - 2 tasche alla francese
- 2 taschine posteriori - Fondo stretto

- Unlined - 2 side pockets
- 2 rear pockets - Slim leg

Taglie / Sizes

40 ÷ 64 Slim Fit

Art. 90

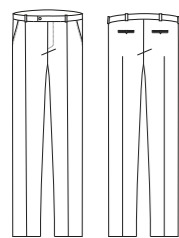
000 Nero / Black

Art. 90/B

004 Blu / Blue

Tessuto / Fabric

100% poliestere
100% polyester
170 g / m²



MAURO

Dettagli / Details

- Foderato - Fondo stretto
- 2 tasche alla francese
- 2 taschine posteriori

- Lined - Slim leg
- 2 side pockets
- 2 rear pockets

Taglie / Sizes

40 ÷ 64 Slim Fit

Art. 12P01P231

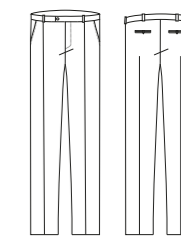
000 Nero / Black

004 Blu / Blue

119 Grigio / Grey

Tessuto / Fabric

53% poliestere 43% lana 4% elastan
53% polyester 43% wool 4% elastane
173 g / m²



ADAM

Dettagli / Details

- Sfoderato - Fondo stretto
- 2 tasche alla francese
- 2 taschine posteriori

- Unlined - Slim leg
- 2 side pockets
- 2 rear pockets

Taglie / Sizes

42 ÷ 56 Slim Fit

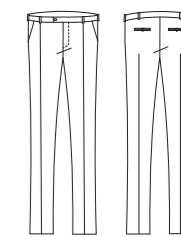
Art. 15P01P602

000 Nero / Black

004 Blu / Blue

Tessuto / Fabric

70% poliestere 25% viscosa 5% elastan
70% polyester 25% viscose 5% elastane
200 g / m²



GIOVANNI

Dettagli / Details

- Sfoderato - Fondo stretto - Vita bassa
- 2 tasche alla francese - 2 taschine posteriori

- Unlined - Slim leg - Low waist
- 2 side pockets - 2 rear pockets

Taglie / Sizes

42 ÷ 58 Slim Fit

Art. 17P01P546

000 Nero / Black

Art. 20P01P546

004 Blu / Blue

Tessuto / Fabric

95% poliestere 5% elastan
95% polyester 5% elastane
220 g / m²

