

& ho.re.ca. SERVICES

CAMICI, CASACCHE E COORDINATI
COATS, TUNICS AND MATCHING SETS

Giblor's
italian worklife specialist





NINFEA

Dettagli / Details
- 2 tasche

- 2 pockets

Taglie / Sizes
XS ÷ XXL Slim Fit

Art. 16P09R22
119 Grigio / Grey

Tessuto / Fabric
70% poliestere 30% cotone
70% polyester 30% cotton
132 g / m²



Art. 11P09R22
000 Nero / Black

Tessuto / Fabric
65% poliestere 35% cotone
65% polyester 35% cotton
140 g / m²



ROSALIA

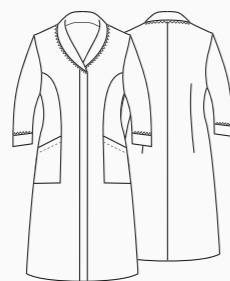
Dettagli / Details
- Collo e polsi staccabili - 2 tasche

- Removable collar and cuffs - 2 pockets

Taglie / Sizes
XS ÷ XXL Regular Fit

Art. 11P09R24
000 Nero / Black

Tessuto / Fabric
65% poliestere 35% cotone
65% polyester 35% cotton
140 g / m²



LILIAN

Dettagli / Details
- Chiuso sul fondo con un piegone centrale
- 2 tasche
- Collo e polsini non staccabili

- Closed from the waist down big central pleat on the front
- 2 pockets
- No removable collar and cuffs

Taglie / Sizes
XS ÷ XXL Slim Fit

Art. 16P09R815
004 Blu / Blue

Tessuto / Fabric
65% poliestere 35% cotone
65% polyester 35% cotton
145 g / m²



Art. 11P09R22
000 Nero / Black



NINFEA

Dettagli / Details

- 2 tasche
- 2 pockets

Taglie / Sizes

XS ÷ XXXL Slim Fit

Art. 12P09R211

R/321 Azzurro / Light blue
R12 Bordeaux / Burgundy

Tessuto / Fabric

100% cotone
100% cotton
110 g / m²



Art. 12P05H265

R/321 Azzurro / Light blue



Art. 12P05H265

R12 Bourdeaux / Burgundy



LEDA

Dettagli / Details

- Grembiellino
- Apron

Taglie / Sizes

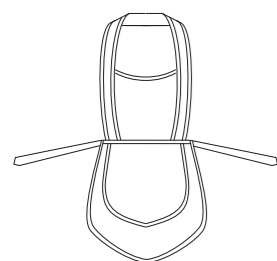
Taglia unica / One size

Art. 12P05H265

R/321 Azzurro / Light blue
R12 Bourdeaux / Burgundy

Tessuto / Fabric

100% cotone
100% cotton
110 g / m²



MARINELLA

Dettagli / Details

- 2 tasche - 2 spacchetti laterali
- 2 pockets - 2 side vents

Taglie / Sizes

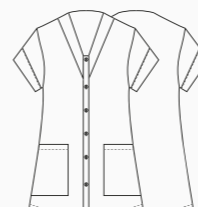
XS ÷ 3XL Regular Fit

Art. 19P09K1510

R035 Avio / Avio

Tessuto / Fabric

60% cotone 40% poliestere
60% cotton 40% polyester
101 g / m²



ROSSELLA

Dettagli / Details

- 3 tasche - Manica ad aletta
- Ampia vestibilità

- 3 pockets - Flap sleeve - Large fit

Taglie / Sizes

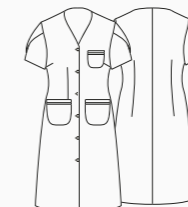
XS ÷ 4XL Oversize

Art. 19P09R330

R035 Avio / Avio

Tessuto / Fabric

60% cotone 40% poliestere
60% cotton 40% polyester
101 g / m²



MARIA

Dettagli / Details

- 3 tasche - Manica ad aletta
- Ampia vestibilità

- 3 pockets - Flap sleeve - Large fit

Taglie / Sizes

XS ÷ 4XL Oversize

Art. 204/B

00 Bianco / White

Tessuto / Fabric

100% cotone
100% cotton
130 g / m²



ROSARIA

Dettagli / Details

- 2 tasche
- 2 pockets

Taglie / Sizes

XS ÷ XXXL Regular Fit

Art. 19P09R135

Q006 Bordeaux / Burgundy
Q000 Nero / Black

Tessuto / Fabric

100% cotone
100% cotton
120 g / m²



Art. 19P09R135
+
Art. 19P09H138
Q006 Bordeaux / Burgundy



Art. 19P09R135
+
Art. 19P09H138
Q000 Nero / Black

MARTINA

Dettagli / Details

- 2 tasche
- 2 pockets

Taglie / Sizes

XS ÷ XXXL Regular Fit

Art. 19P09R136

R118 Celeste / Light blue
R035 Avio / Avio

Tessuto / Fabric

60% cotone 40% poliestere
60% cotton 40% polyester
101 g / m²



Art. 19P09R136
+
Art. 19P09H139
R118 Celeste / Light blue



Art. 19P09R136
+
Art. 19P09H139
R035 Avio / Avio

ELSA

Dettagli / Details

- Grembiule
- Apron

Taglie / Sizes

Taglia unica / One size

Art. 19P09H138

Q006 Bordeaux / Burgundy
Q000 Nero / Black

Tessuto / Fabric

100% cotone
100% cotton
120 g / m²



ELSA

Dettagli / Details

- Grembiule
- Apron

Taglie / Sizes

Taglia unica / One size

Art. 19P09H139

R118 Celeste / Light blue
R035 Avio / Avio

Tessuto / Fabric

60% cotone 40% poliestere
60% cotton 40% polyester
101 g / m²





Art. 414



Art. 441



Art. 481



Art. 482

MARY

Taglie / Sizes
Taglia unica / One size

Art. 414
00 Bianco / White

Tessuto / Fabric
100% cotone
100% cotton
130 g / m²



ANTONIA

Taglie / Sizes
Taglia unica / One size

Art. 441
00 Bianco / White

Tessuto / Fabric
52% poliestere 48% cotone
52% polyester 48% cotton
171 g / m²



GREMBIULE

Taglie / Sizes
Taglia unica / One size

Art. 481
Art. 482
00 Bianco / White

Tessuto / Fabric
100% cotone
100% cotton
185 g / m²

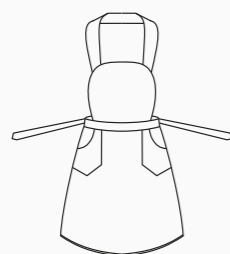


ROSY

Taglie / Sizes
Taglia unica / One size

Art. 417
00 Bianco / White

Tessuto / Fabric
100% cotone
100% cotton
185 g / m²



ADELINA

Taglie / Sizes
Taglia unica / One size

Art. 440
00 Bianco / White

Tessuto / Fabric
52% poliestere 48% cotone
52% polyester 48% cotton
171 g / m²



GISELLE

Dettagli / Details

- 2 tasche

- 2 pockets

Taglie / Sizes

XS ÷ XXXL Slim Fit

Art. 20P09K223

00 Bianco / White

Tessuto / Fabric

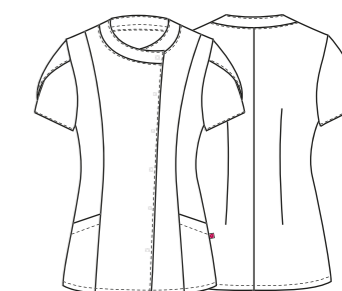
65% poliestere 35% cotone
65% polyester 35% cotton
140 g / m²

Art. 20P09K224

R035 Riga Avio / Avio

Tessuto / Fabric

50% cotone 35% poliestere
50% cotton 35% polyester
105 g / m²



FLEXFIT SYSTEM

UNCHANGE

TECH

Art. 20P09K223
00 Bianco / White

Art. 20P09K224
R035 Riga Avio / Avio

MONICA

Dettagli / Details

- 2 tasche

- 2 pockets

Taglie / Sizes

XS ÷ XXXL Slim Fit

Art. 20P09K222

033 Corallo / Coral

025 Lilla / Lilac

026 Verde acqua / Green

Tessuto / Fabric

70% poliestere 30% cotone

70% polyester 30% cotton

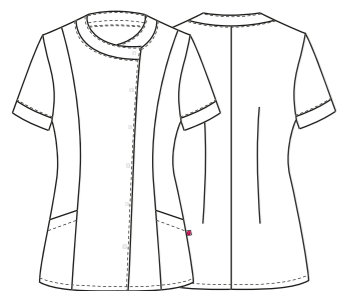
132 g / m²



Art. 20P09K222
025 Lilla / Lilac



Art. 20P09K222
026 Verde acqua / Green



FLEXFIT SYSTEM

UNCHANGE

TECH

Art. 20P09K222
033 Corallo / Coral

AURELIA

Dettagli / Details

- 2 tasche
- Abbottonatura nascosta

- 2 pockets
- Concealed buttoning

Taglie / Sizes

XS ÷ XXXL Slim Fit

Art. 16P09K867

1000 Avana / Avana

Tessuto / Fabric

100% cotone / cotton
160 g / m²



AURELIA

Dettagli / Details

- 2 tasche
- Abbottonatura nascosta

- 2 pockets
- Concealed buttoning

Taglie / Sizes

XS ÷ 4XL Slim Fit

Art. 11P09K50

U8 Grigio / Grey
U5 Azzurro / Light blue

Tessuto / Fabric

100% cotone / cotton
130 g / m²



Art. 11P09K50

U8 Grigio / Grey



Art. 11P09K50

U5 Azzurro / Light blue

Art. 16P09K822

004 Blu / Blue

Tessuto / Fabric

65% poliestere 35% cotone
65% polyester 35% cotton
145 g / m²



Art. 16P09K822

004 Blu / Blue



Art. 19P09K137

Q013 Fucsia / Fucsia



Art. 19P09K137

Q026 Verde acqua / Green water



Art. 19P09K137

Q013 Fucsia / Fucsia
Q026 Verde acqua / Green

Taglie / Sizes

XS ÷ XXXL Slim Fit

Tessuto / Fabric

100% cotone
100% cotton
120 g / m²

OLGA

- 2 tasche
- Chiusura con zip

- 2 pockets
- Zip fastening

Taglie / Sizes

XS ÷ XXXL Regular Fit

Art. 13P09K318

204 Azzurro / Light blue
 844 Rosa / Pink
 597 Lilla / Lilac
 00 Bianco / White

Tessuto / Fabric

65% poliestere 35% cotone
 65% polyester 35% cotton
 132 g / m²



Art. 13P09K318
844 Rosa / Pink



Art. 13P09K318
597 Lilla / Lilac



Art. 13P09K318
00 Bianco / White



FLEXFIT SYSTEM

UNCHANGE



ULTRA LIGHT

FLEXFIT SYSTEM

UNCHANGE



ULTRA LIGHT

BETTY

Dettagli / Details

- 2 tasche
- Manica arrotolabile

- 2 pockets
- Roll-up sleeve

Taglie / Sizes

XS ÷ XXXL Regular Fit

Art. 20P09K226

119 Grigio / Grey
016 Tortora / Taupe

Tessuto / Fabric

65% poliestere 35% cotone
65% polyester 35% cotton
115 g / m²



TULIPANO

Dettagli / Details

- Coperto dietro
- Covered backside

Taglie / Sizes

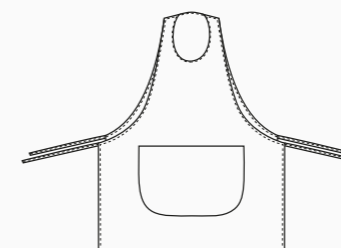
Taglia unica / One size

Art. 86

00 Bianco / White

Tessuto / Fabric

100% cotone
100% cotton
185 g / m²



OLGA

Dettagli / Details

- 2 tasche - Con zip
- Tessuto Piquet
- 2 pockets - With zip - Piquet fabric

Taglie / Sizes

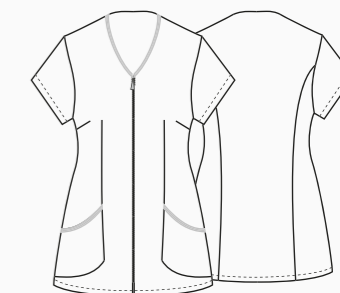
XS ÷ XXXL Regular Fit

Art. 14P09K453

00 Bianco / White

Tessuto / Fabric

52% poliestere 48% cotone
52% polyester 48% cotton
171 g / m²





Art. 118
595 Blu / Blue
XS ÷ XXL
140 g / m²



Art. 118
426 Verde / Green
XS ÷ XXL
140 g / m²



Art. 1350C
525 Bluette / Royal
S ÷ XXL
140 g / m²



GENOVA

Dettagli / Details
- Manica lunga elastico al polso - 3 tasche
- Cuff with elastic band - 3 pockets

Taglie / Sizes
XS ÷ XXXL Regular Fit

Art. 116
00 Bianco / White

Tessuto / Fabric
65% poliestere 35% cotone
65% polyester 35% cotton
140 g / m²



SIENA

Dettagli / Details
- Manica lunga elastico al polso - 3 tasche
- Cuff with elastic band - 3 pockets

Taglie / Sizes
XS ÷ XXL Regular Fit

Art. 200
00 Bianco / White

Tessuto / Fabric
65% poliestere 35% cotone
65% polyester 35% cotton
140 g / m²



Art. 200C
595 Blu / Blue
XS ÷ XXL
140 g / m²



Art. 1355C
426 Verde / Green
XS ÷ XXL
140 g / m²



Art. 200C
525 Bluette / Royal
XS ÷ XXL
140 g / m²

