

EVOLUTION

collection



CLUBCLASS





EVOLUTION

collection


Tailored from a fabric that is currently being worn by 1000's of happy wearers. Used in our collections for more than 10 years this is a truly tried and tested, mid weight Poly/Wool/Lycra.

Some of Europe's largest companies wear the Evolution Collection. From the front of house desk at London's best hotels to a number of high profile transport companies. All enjoy the comfort and high level of Performance that Evolution provides.

Mid Weight	Available in 3 colours
315 grams	Black
per linear metre	Charcoal
	Navy

Image –
Mens Limehouse Tailored Fit Jacket
Charcoal

Ladies Perivale Dress
Charcoal

 Order your swatch card online
clubclasscorporatewear.co.uk

64%	Polyester
34%	Wool
2%	Lycra Weft Stretch
Weight	315 grams per linear metre
Durability	50,000 + Rubs on the Martindale test
Pilling	Grade 4/5
Aftercare	Machine Washable at 40°C

Fabric meets Oeko-Tex standard 100



Image Right –
 Tooting Slim Fit Jacket
 Leyton Slim Fit Trousers
 Navy

Image Left –
 Bond Waistcoat
 Leyton Slim Fit Trousers
 Navy



Did you Know

95% of the polyester used in
 our collections is made from
 recycled plastic bottles



Image Right –
Limehouse Tailored Fit Jacket
Soho Tailored Fit Trousers
Charcoal

Image Below –
Soho Tailored Fit Trousers
Charcoal



Tailored Fit

A contemporay shape for
wearers who want an up to
date trouser



Image Right & Below –
Temple Tailored Fit Jacket
Navy

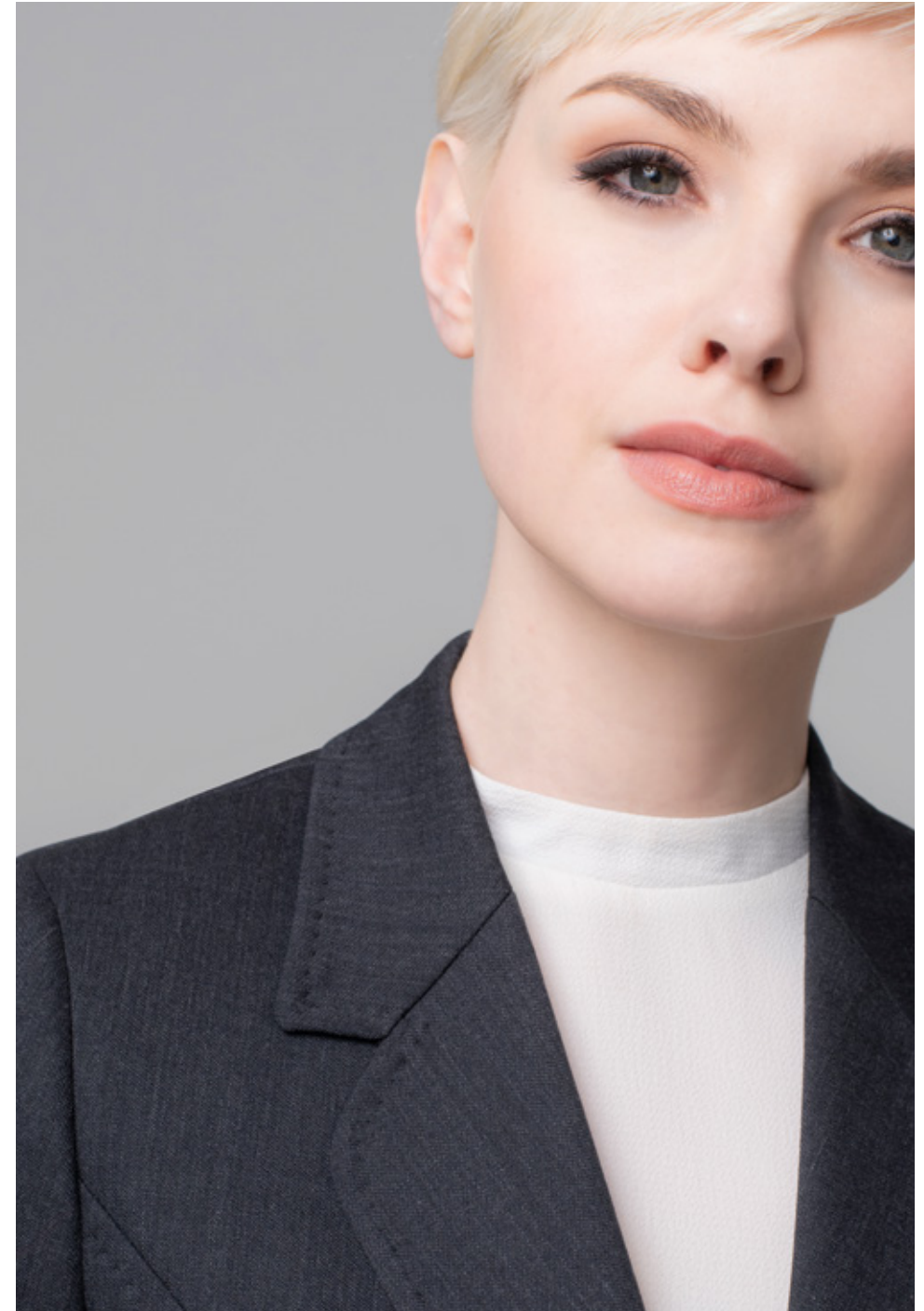


EVOLUTION



Image Left & Below –
Islington Tailored Fit Jacket
Charcoal

Pentonville Slim Fit Trousers
Charcoal



[View the full ladies collection on pages 50 — 55](#)



Image Left –
Regent Trousers
Navy

Close Up Detail Of The Cash Pocket
on the Regent Trousers

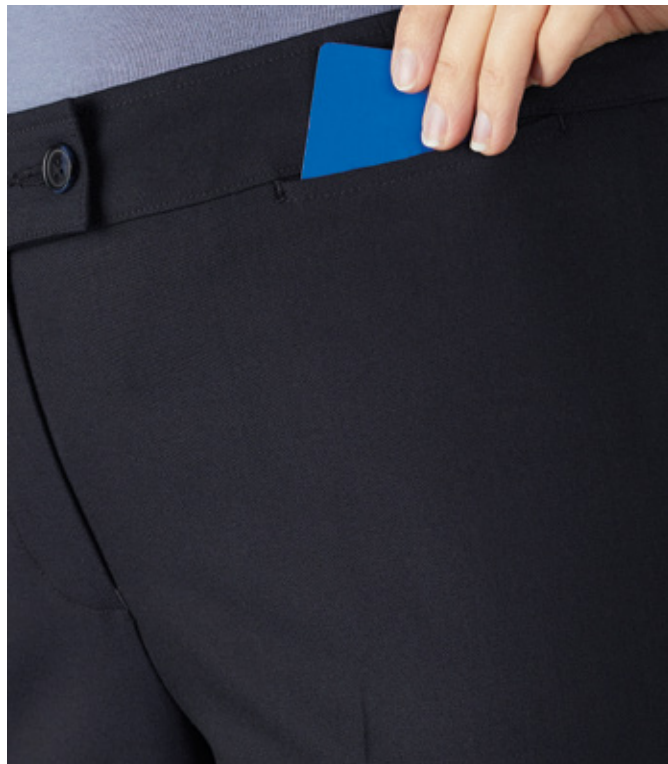


Image Below –
Temple Tailored Fit Jacket
Black





Image Left –
Perivale Dress
Black

Image Below –
Angel Skirt
Charcoal



EVOLUTION

MENS JACKET & WAISTCOAT RANGE



TOOTING

Single Breasted Slim Fit Jacket

FEATURES	SIZES
2 button fastening Side vents	Short Reg Long (UK) 34 – 48 (EU) 44 – 58

Black J6005B	Charcoal J6005C	Navy J6005N
-----------------	--------------------	----------------



LIMEHOUSE

Single Breasted Tailored Fit Jacket

FEATURES	UK SIZES	EU SIZES
2 button fastening Side vents	34 – 48 Short 34 – 50 Reg 36 – 50 Long	44 – 58 Short 44 – 60 Reg 46 – 60 Long

Black J6000B	Charcoal J6000C	Navy J6000N
-----------------	--------------------	----------------



WHITEHALL

Single Breasted Classic Fit Jacket

FEATURES	UK SIZES	EU SIZES
3 button fastening Centre vent	34 – 48 Short 34 – 54 Reg 36 – 48 Long	44 – 58 Short 44 – 64 Reg 46 – 58 Long

Black J6001B	Charcoal J6001C	Navy J6001N
-----------------	--------------------	----------------



BOND

Waistcoat

FEATURES	SIZES
5 button fastening Fabric back	Regular (UK) 34 – 50 (EU) 44 – 60

Black W6004B	Charcoal W6004C	Navy W6004N
-----------------	--------------------	----------------

GARMENT INFORMATION

64%	Polyester	Weight	315 grams per linear metre
34%	Wool	Durability	50,000 + Rubs on the Martindale test
2%	Lycra Weft Stretch	Pilling	Grade 4/5
		Aftercare	Machine Washable at 40°C
			Fabric meets Oeko-Tex standard 100

SIZE GUIDE

Men	
Short	Men under 5'6" tall
Regular	Men between 5'7" & 6'1" tall
Long	Men over 6'1" tall

ORDERING & DELIVERY

Order by 3pm for next day delivery

EVOLUTION

MENS TROUSER RANGE



LEYTON

Plain Front Slim Fit Trousers

FEATURES	UK SIZES	EU SIZES
French bearer	28 – 40 Short	44 – 56 Short
Belt loops	28 – 42 Reg	44 – 58 Reg
2 Hip pockets	28 – 40 Long	44 – 56 Long
1/2 lined	28 – 42 Un Finished	44 – 58 Un Finished

Black	Charcoal	Navy
T6006B	T6006C	T6006N

SOHO

Plain Front, Tailored Fit Trousers

FEATURES	SIZES
French bearer	Short Reg
Belt loops	Long Unfinished
2 Hip pockets	(UK) 28 – 50
1/2 Lined	(EU) 44 – 66

Black	Charcoal	Navy
T6002B	T6002C	T6002N

WESTMINSTER

Single Pleat, Classic Fit Trousers

FEATURES	SIZES
French bearer	Short Reg
Belt loops	Long Unfinished
2 Hip pockets	(UK) 28 – 50
1/2 Lined	(EU) 44 – 66

Black	Charcoal	Navy
T6003B	T6003C	T6003N

INSIDE LEG MEASUREMENTS

Short	Regular	Long	Unfinished
29"IL 74CM	31"IL 79CM	33"IL 84CM	37"IL 94CM

SIZE GUIDE

Men	
Short	Men under 5'6" tall
Regular	Men between 5'7" & 6'1" tall
Long	Men over 6'1" tall

GARMENT INFORMATION

64%	Polyester	Weight	315 grams per linear metre
34%	Wool	Durability	50,000 + Rubs on the Martindale test
2%	Lycra Weft Stretch	Pilling	Grade 4/5
		Aftercare	Machine Washable at 40°C
			Fabric meets Oeko-Tex standard 100

ORDERING & DELIVERY

Order by 3pm for next day delivery

EVOLUTION

LADIES JACKET RANGE



ISLINGTON

Single Breasted Tailored Fit Jacket

FEATURES	UK SIZES	EU SIZES
2 button fastening	6 – 16 Petite	34 – 44 Petite
Tulip lapel	6 – 24 Reg	34 – 52 Reg
4 panel back detail	6 – 24 Long	34 – 52 Long

Black	Charcoal	Navy
J3000B	J3000C	J3000N



TEMPLE

Single Breasted Tailored Fit Jacket

FEATURES	UK SIZES	EU SIZES
2 button fastening	4 – 20 Petite	32 – 48 Petite
Peak lapel	6 – 24 Reg	34 – 52 Reg
Centre back vent	6 – 24 Long	34 – 52 Long

Black	Charcoal	Navy
J3013B	J3013C	J3013N



STRAND

Waistcoat

FEATURES	SIZES
4 button fastening	Regular
Fabric back	(UK) 6 – 24
	(EU) 34 - 52

Black	Charcoal	Navy
V3008B	V3008C	V3008N



VICTORIA

Single Breasted Classic Fit Jacket

FEATURES	UK SIZES	EU SIZES
3 button fastening	6 – 16 Petite	34 – 44 Petite
Peak lapel	6 – 24 Reg	34 – 52 Reg
Centre back vent	8 – 24 Long	36 – 52 Long

Black	Charcoal	Navy
J3002B	J3002C	J3002N



BELGRAVIA

Single Breasted Classic Fit Jacket

FEATURES	UK SIZES	EU SIZES
3 button fastening	6 – 16 Petite	34 – 44 Petite
Tulip lapel	6 – 24 Reg	34 – 52 Reg
4 Panel back detail	8 – 24 Long	36 – 52 Long

Black	Charcoal	Navy
J3001B	J3001C	J3001N



SAVOY

Single Breasted Tailored Tailcoat

FEATURES	UK SIZES
3 button fastening	Regular
	(UK) 6 – 18
	(EU) 34 – 46

Black
J3003B

GARMENT INFORMATION

64%	Polyester	Weight	315 grams per linear metre
34%	Wool	Durability	50,000 + Rubs on the Martindale test
2%	Lycra Weft Stretch	Pilling	Grade 4/5
		Aftercare	Machine Washable at 40°C
			Fabric meets Oeko-Tex standard 100

SIZE GUIDE

Ladies	
Petite	Women under 5'2" tall
Regular	Women between 5'3" & 5'9" tall
Long	Women over 5'10" tall

ORDERING & DELIVERY

Order by 3pm for next day delivery

EVOLUTION

LADIES TROUSER RANGE



PENTONVILLE

Slim Fit Trousers

FEATURES	SIZES
Front fastening	Short Reg Long
Slim leg	Unfinished
x1 Zip cash pocket	(UK) 4 – 24
Hip pockets	(EU) 32 - 52
Belt loops	

Black	Charcoal	Navy
T3012B	T3012C	T3012N



KENSINGTON

Tailored Fit Trousers

FEATURES	SIZES
Front Fastening	Short Reg Long
2 pockets	Unfinished
Deep waistband	(UK) 6 – 24
1/2 Lined	(EU) 34 - 52

Black	Charcoal	Navy
T3008B	T3008C	T3008N



REGENT

Tailored Fit Trousers

FEATURES	SIZES
Front fastening	Short Reg Long
Cash pocket	Unfinished
1/2 Lined	(UK) 6 – 24
	(EU) 34 - 52

Black	Charcoal	Navy
T3007B	T3007C	T3007N



MAYFAIR

Classic Fit Trousers

FEATURES	SIZES
Front fastening	Short Reg Long
Flared leg	Unfinished
Cash pocket	(UK) 6 – 24
1/2 Lined	(EU) 34 - 52

Black	Charcoal	Navy
T3006B	T3006C	T3006N

GARMENT INFORMATION

64%	Polyester	Weight	315 grams per linear metre
34%	Wool	Durability	50,000 + Rubs on the Martindale test
2%	Lycra Weft Stretch	Pilling	Grade 4/5
		Aftercare	Machine Washable at 40°C
			Fabric meets Oeko-Tex standard 100

INSIDE LEG MEASUREMENTS

Short	Regular	Long	Unfinished
29"IL	31"IL	34"IL	37"IL
74CM	79CM	86CM	94CM

IN BETWEEN SIZES

Sizes 11 & 13 also available

ORDERING & DELIVERY

Order by 3pm for next day delivery

SIZE GUIDE

Ladies	
Petite	Women under 5'2" tall
Regular	Women between 5'3" & 5'9" tall
Long	Women over 5'10" tall



Hem widths are based on size 8

EVOLUTION

LADIES DRESSES & SKIRTS



PERIVALE

Dress

FEATURES	SIZES
Knee length	Regular
V neck detail	(UK) 4 – 24
Fully lined	(EU) 32 – 52
x2 Zip pockets	
Rear vent	

Black	Charcoal	Navy
D3011B	D3011C	D3011N



SLOANE

Dress

FEATURES	SIZES
Knee length	Regular
Shoulder darts	(UK) 4 – 24
Hip darts	(EU) 32 – 52
Fully lined	
Rear vent	

Black	Charcoal	Navy
D3009B	D3009C	D3009N



ANGEL

Pencil Skirt

FEATURES	SIZES
Pencil skirt	Regular (58cm 23" length)
Front seam detail	Long (64cm 25" length)
Rear centre vent	(UK) 6 – 24
	(EU) 34 – 52

Black	Charcoal	Navy
S3004B	S3004C	S3004N



PIMLICO

Longline Skirt

FEATURES	SIZES
Longline skirt	Regular (86cm 34" length)
Front & rear vent	(UK) 6 – 24
	(EU) 34 – 52

Black	Charcoal	Navy
S3005B	S3005C	S3005N

GARMENT INFORMATION

64%	Polyester	Weight	315 grams per linear metre
34%	Wool	Durability	50,000 + Rubs on the Martindale test
2%	Lycra Weft Stretch	Pilling	Grade 4/5
		Aftercare	Machine Washable at 40°C
		Fabric meets	Oeko-Tex standard 100

ORDERING & DELIVERY

Order by 3pm for next day delivery

SIZE GUIDE

Ladies	
Petite	Women under 5'2" tall
Regular	Women between 5'3" & 5'9" tall
Long	Women over 5'10" tall

Head Office (UK)
Stuncroft Ltd,
Units 2-3 Island Drive,
Thorne, Doncaster,
DN8 5UE

+44(0) 1405 782780
corporatewear@stuncroft.co.uk

